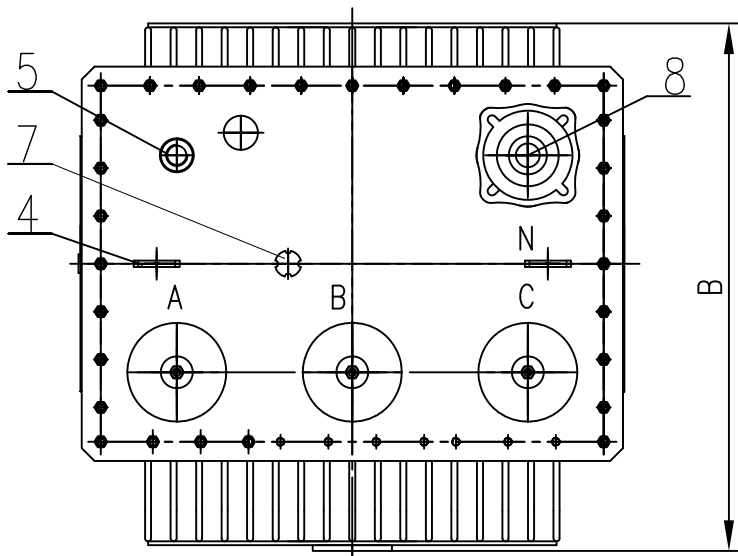
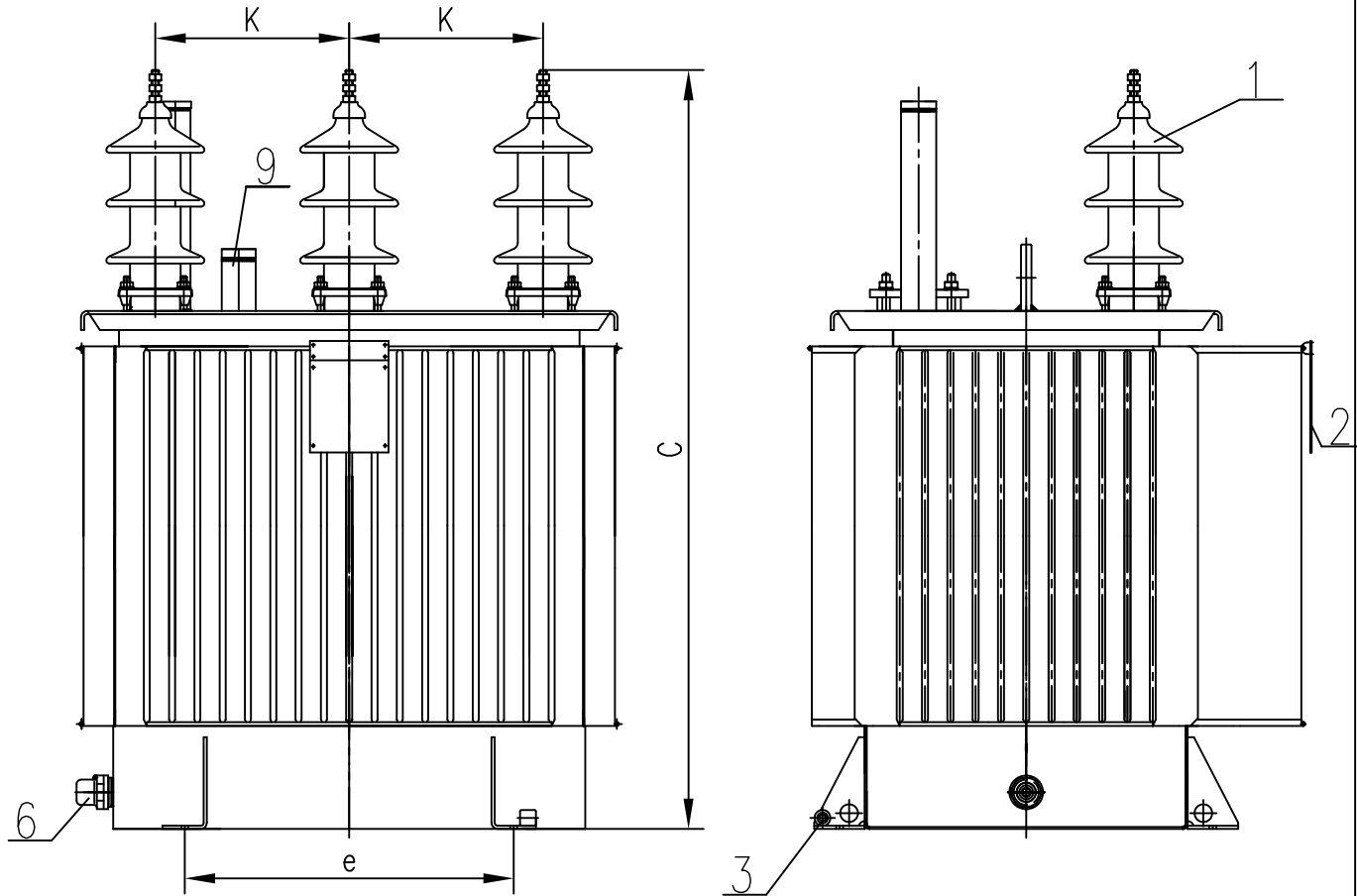


KKM

Three-phase oil-immersed
hermetically sealed shunt reactor
30-148kVAr, 20.5kV, YN

SHR 8-20,5 2,5-12,5



1. H.V. Bushing
2. Name plate
3. Earthing terminal
4. Lifting lugs
5. Oil filling tube
6. Oil drain valve
7. Tap changer
8. Neutral Plug-in bushing
9. Oil level indicator

kVAr	A	B	C	d	e	g	l	m	k		n		Mass(kg)	
									H.V.	L.V.	H.V.	L.V.	Oil	Total
30-148	885	905	1300	-	-	-	-	-	275	-	385	-	235	1190

DIMENSIONAL DRAWING

*Note: dimensions and masses are approximate